

## MATERIAL SAFETY DATA SHEET

### Manufacturer/information service:

CHANGZHOU BOOMING CROP SCIENCE CO.,LTD

NO.2, BUILDING 53,HUNDSUN SCIENCE &TECHNOLOGY PARK,BEITANGHE  
ROAD,TIANNING DISTRICT, CHANGZHOU, JIANGSU, CHINA

Phone: 86-519-68208602

Fax: 86-519-85851009

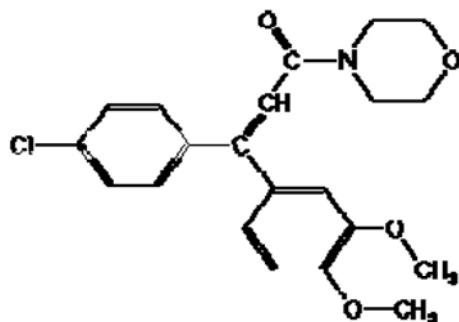
### 1. Chemical Product Identification

Product Name: DIMETHOMORPH

Molecular Formula:  $C_{21}H_{22}ClNO_4$

Molecular Weight: 387.9

Structural Formula:



Chemical Name: 4-[3-(4-chlorophenyl)-3-(3,4-dimethoxyphenyl)-1-oxo-2-propenyl] morpholine

Form: Solid

Color: White

Odor: Sulfur odor.

CAS No.: 110488-70-5

UN NO.: 3077

### 2. Composition / Information On Ingredients

Composition	CAS No.	Content %
Dimethomorph	110488-70-5	97.0
Other ingredients		

### 3. Hazards Identification

Keep out of reach of children. See product label and Directions for Use for additional precautionary statements. Harmful if swallowed.

#### 4. First Aid Measures

Eye Contact: Flush eyes with large amounts of water. Get medical attention if irritation persists.

Skin Contact: Wash skin with plenty of soap and water. Remove contaminated clothing and launder before use. Get medical attention if irritation persists. Sensitized persons should avoid further contact and reuse of clothing.

Ingestion: If swallowed, call a physician or Poison Control Center. Drink 1 or 2 glasses of water and induce vomiting by touching back of throat with finger. Do not induce vomiting or give anything by mouth to an unconscious person. Obtain prompt medical attention.

Inhalation: Remove subject to fresh air. Get medical attention.

#### 5. Fire-Fighting Measures

Fire Extinguishing Media: Use alcohol foam, carbon dioxide, water (spray or fog), or dry chemical extinguishing media to extinguish fires.

#### 6. Accidental Release Measures

In case of large-scale spillage of this product, avoid contact, isolate area and keep out animals and unprotected persons. For a small spill, wear appropriate protective clothing and personal protective equipment. Keep away from drains, surface and ground water, and soil. Shovel or sweep the spilled material into covered containers for proper disposal. If possible, reuse the material for its intended purpose.

#### 7. Handling And Storage

Handling: Avoid raising a dust cloud. Avoid contact with the eyes. Wash hands before eating, drinking, or smoking. After work, change out of work clothes and bathe or shower.

Storage: Not for use or storage in or around the home. Do not contaminate water, food, or feed by storage or disposal. Store in a secure, wellventilated, separate area or warehouse, away from children, livestock, and food products. Store under cool and dry conditions.

#### 8. Exposure Controls/Personal Protection

Exposure Control: Do not eat, smoke, or drink at the workplace.

Personal Protective Equipment: Pesticide Applicator & Workers must refer to the product label and Directions for Use attached to the product for Agricultural Use Requirements in accordance with the EPA Worker Protection Standard 40 CFR part 170.

Eye Protection: Chemical goggles or some other form of eye protection

must be worn to prevent exposure to the eyes.

Skin Protection: Wear coveralls, boots and nitrile rubber or neoprene gloves. Rubber gloves should be washed with soap and water after each use. Do not wear the same gloves for other work. Replace gloves frequently. Avoid exposure to spray during application. Remove contaminated clothing and wash before reuse. Shower at the end of the work day and change clothing.

#### 9. Physical and Chemical Properties

Solubility: in water is greater than 50 mg/l at 20-23 °C

Soluble in other solvents including acetone, toluene, hexane, and methanol

Melting Point: 125-149°C

#### 10. Stability and Reactivity

Stability: Thermally and hydrolytically stable. Store in a cool, well-ventilated area.

Stability conditions to avoid: The product should be handled and stored in the absence of moisture and at temperatures below 90° C.

#### 11. Toxicological Information

Dimethomorph is only slightly toxic to mammals. The LD50, the dose which kills half of the test animals who consume it, is 3900 mg/kg for rats,

5000 mg/kg for male mice, and 3700 mg/kg for female mice. The LD50 for rats whose skin is exposed to dimethomorph is greater than 2000 mg/kg. The concentration of dimethomorph in air, which is fatal to half of the animals tested, the LC50, is greater than 4.24 mg/l air for rats. Dimethomorph is non-irritating to rabbit eyes and skin. It is non-sensitizing to guinea pigs' skin.

#### 12. Ecological And Ecotoxicological Information

This product is harmless to honey bees by both oral and dermal administration.

#### 13. Disposal Considerations

Not applicable

#### 14. Transport Information



Not applicable

#### **15. Regulatory Information**

Not applicable

#### **16. Other Information**

All information and instructions provided in this Material Safety Data Sheet (MSDS) are based on the current state of scientific and technical knowledge at the date indicated on the present MSDS and are presented in good faith and believed to be correct. This information applies to the product as such. In case of new formulations or mixes, it is necessary to ascertain that a new danger will not appear. It is the responsibility of persons on receipt of this MSDS to ensure that the information contained herein is properly read and understood by all people who may use, handle, dispose or in any way come in contact with the product. If the recipient subsequently produce formulations containing this product, it is the recipients sole responsibility to ensure the transfer of all relevant information from this MSDS to their own MSDS.